

D

- C

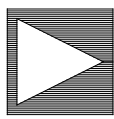
B

- A

-

- FAB NOTES REVISION: 2ND NOVEMBER 2022

() OTHER

PRIMARY SIDE

ANALOG DEVICES

SIZE

FSCM NO

DRAWING NUMBER

REV

C

24355

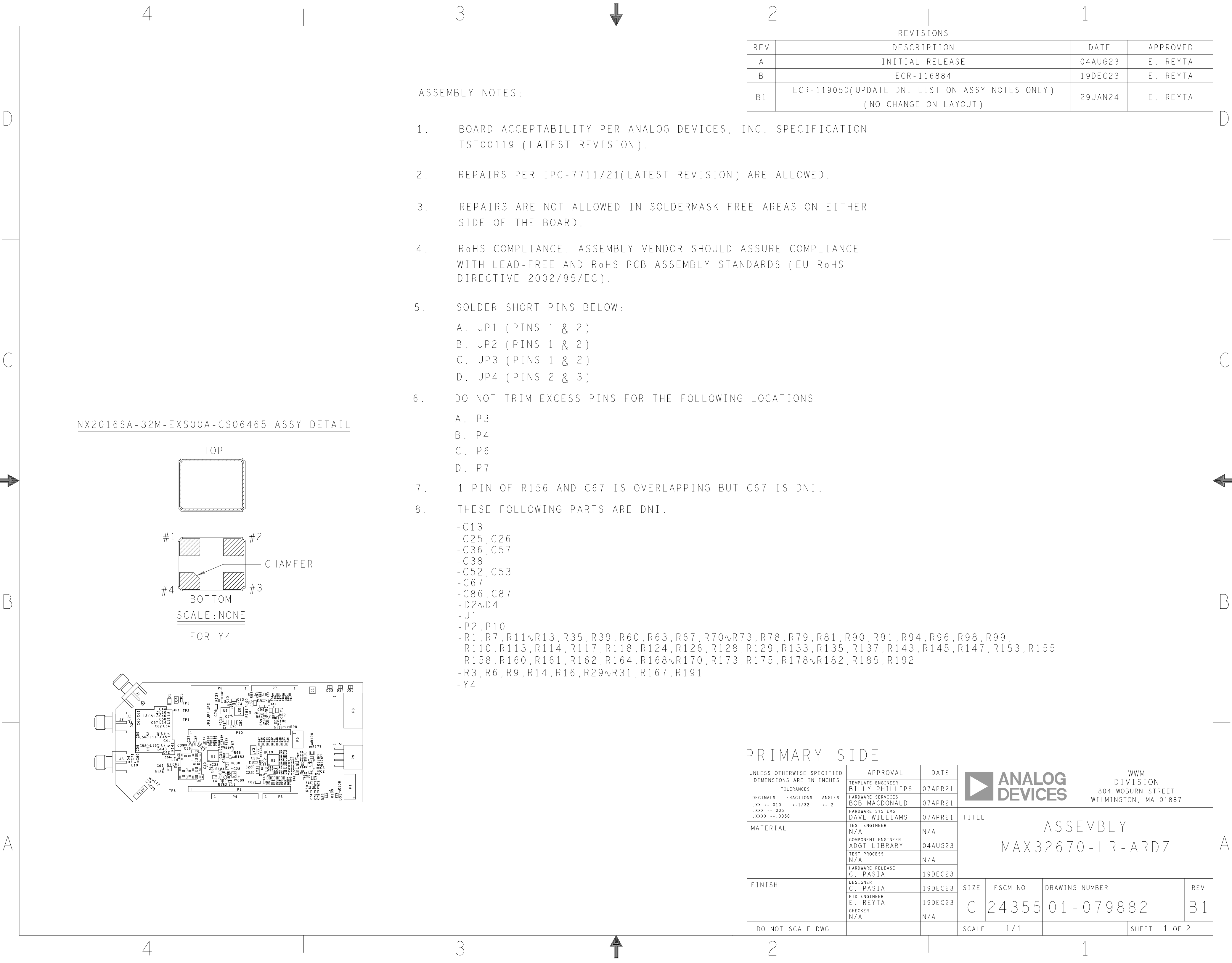
09-079882

B

SCALE

1 / 1

SHEET 2 OF 2

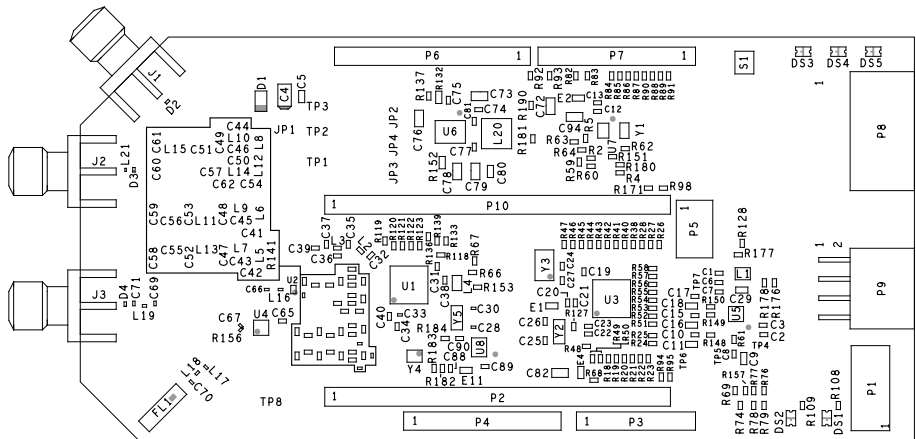
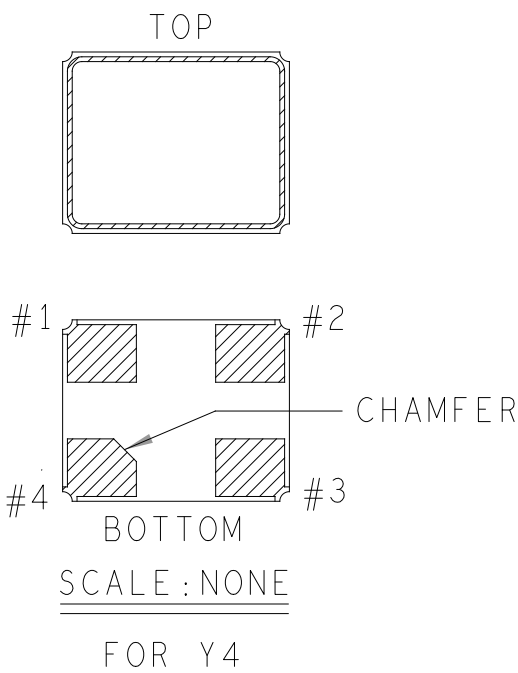


| REVISIONS | | | |
|-----------|---|---------|----------|
| REV | DESCRIPTION | DATE | APPROVED |
| A | INITIAL RELEASE | 04AUG23 | E. REYTA |
| B | ECR-116884 | 19DEC23 | E. REYTA |
| B1 | ECR-119050(UPDATE DNI LIST ON ASSY NOTES ONLY) (NO CHANGE ON LAYOUT) | 29JAN24 | E. REYTA |

ASSEMBLY NOTES:

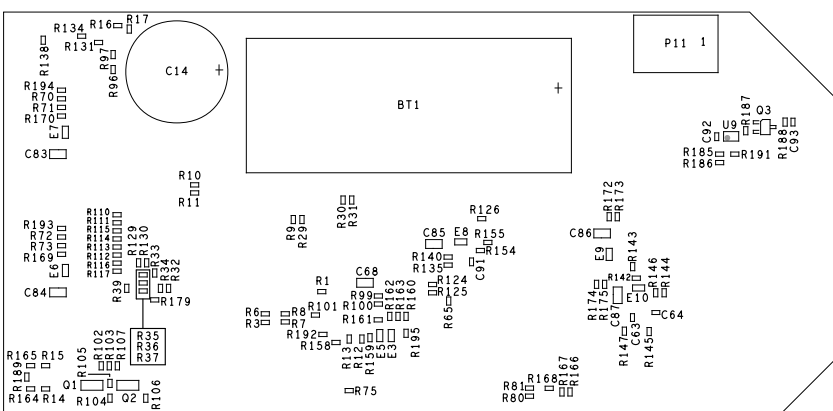
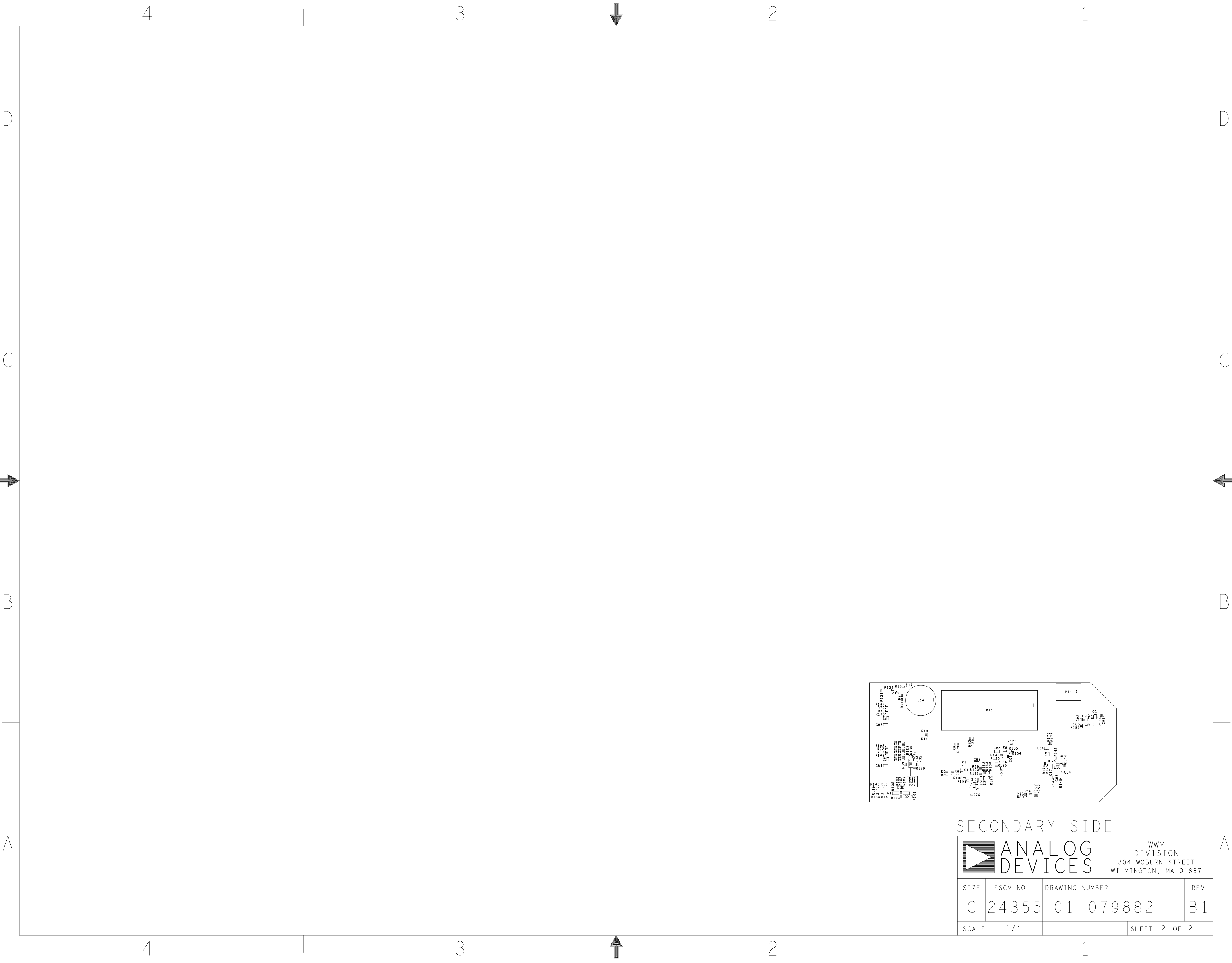
- BOARD ACCEPTABILITY PER ANALOG DEVICES, INC. SPECIFICATION TST00119 (LATEST REVISION).
- REPAIRS PER IPC-7711/21(LATEST REVISION) ARE ALLOWED.
- REPAIRS ARE NOT ALLOWED IN SOLDERMASK FREE AREAS ON EITHER SIDE OF THE BOARD.
- RoHS COMPLIANCE: ASSEMBLY VENDOR SHOULD ASSURE COMPLIANCE WITH LEAD-FREE AND RoHS PCB ASSEMBLY STANDARDS (EU RoHS DIRECTIVE 2002/95/EC).
- SOLDER SHORT PINS BELOW:
 - JP1 (PINS 1 & 2)
 - JP2 (PINS 1 & 2)
 - JP3 (PINS 1 & 2)
 - JP4 (PINS 2 & 3)
- DO NOT TRIM EXCESS PINS FOR THE FOLLOWING LOCATIONS
 - P3
 - P4
 - P6
 - P7
- 1 PIN OF R156 AND C67 IS OVERLAPPING BUT C67 IS DNI.
- THESE FOLLOWING PARTS ARE DNI.
 - C13
 - C25,C26
 - C36,C57
 - C38
 - C52,C53
 - C67
 - C86,C87
 - D2~D4
 - J1
 - P2,P10
 - R1,R7,R11~R13,R35,R39,R60,R63,R67,R70~R73,R78,R79,R81,R90,R91,R94,R96,R98,R99,R110,R113,R114,R117,R118,R124,R126,R128,R129,R133,R135,R137,R143,R145,R147,R153,R155,R158,R160,R161,R162,R164,R168~R170,R173,R175,R178~R182,R185,R192
 - R3,R6,R9,R14,R16,R29~R31,R167,R191
 - Y4

NX2016SA-32M-EXS00A-CS06465 ASSY DETAIL

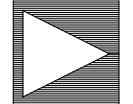


PRIMARY SIDE

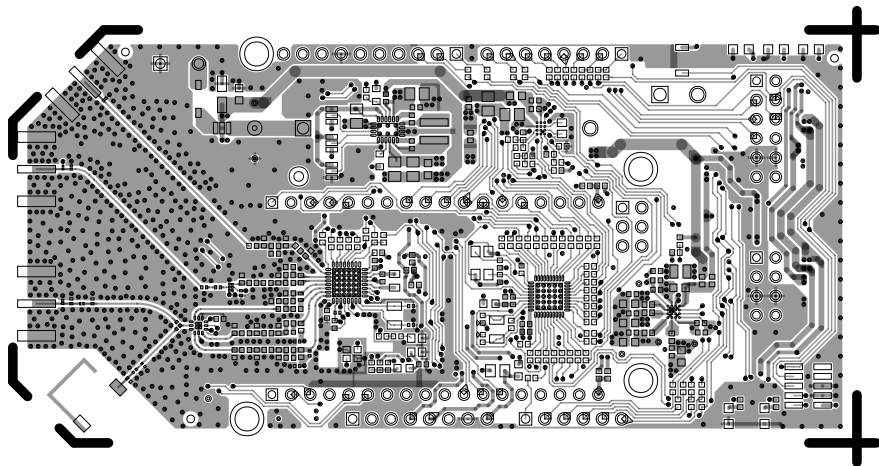
| | | | | | | | | |
|--|-------------------------------------|--|---------|-------------|---|--------------|----------------|-----|
| UNLESS OTHERWISE SPECIFIED DIMENSIONS ARE IN INCHES TOLERANCES DECIMALS FRACTIONS ANGLES .XX -.010 --1/32 -- 2 .XXX -.005 .XXXX -.0050 | APPROVAL | | DATE | | <div><div></div><div>ANALOG DEVICES</div></div> <div>WWM DIVISION 804 WOBURN STREET WILMINGTON, MA 01887</div> <div>TITLE ASSEMBLY MAX32670-LR-ARDZ</div> | | | |
| | TEMPLATE ENGINEER BILLY PHILLIPS | | 07APR21 | | | | | |
| | HARDWARE SERVICES BOB MACDONALD | | 07APR21 | | | | | |
| | HARDWARE SYSTEMS DAVE WILLIAMS | | 07APR21 | | | | | |
| MATERIAL | TEST ENGINEER N/A | | N/A | | SIZE | FSCM NO | DRAWING NUMBER | REV |
| | COMPONENT ENGINEER ADGT LIBRARY | | 04AUG23 | | | | | |
| | TEST PROCESS N/A | | N/A | | | | | |
| | HARDWARE RELEASE C. PASIA | | 19DEC23 | | | | | |
| FINISH | DESIGNER C. PASIA | | 19DEC23 | | C | 24355 | 01 - 079882 | B1 |
| | PTD ENGINEER E. REYTA | | 19DEC23 | | | | | |
| | CHECKER N/A | | N/A | | | | | |
| | | | | | | | | |
| DO NOT SCALE DWG | | | | SCALE 1 / 1 | | SHEET 1 OF 2 | | |



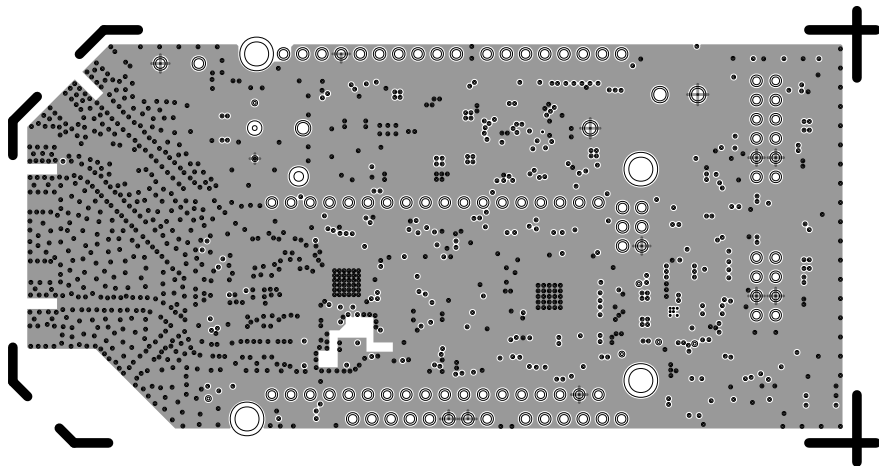
SECONDARY SIDE

| | | | |
|---|---------|--|-----|
|  | | WWM DIVISION 804 WOBURN STREET WILMINGTON, MA 01887 | |
| | | | |
| SIZE | FSCM NO | DRAWING NUMBER | REV |
| C | 24355 | 01-079882 | B1 |
| SCALE | 1 / 1 | SHEET 2 OF 2 | |

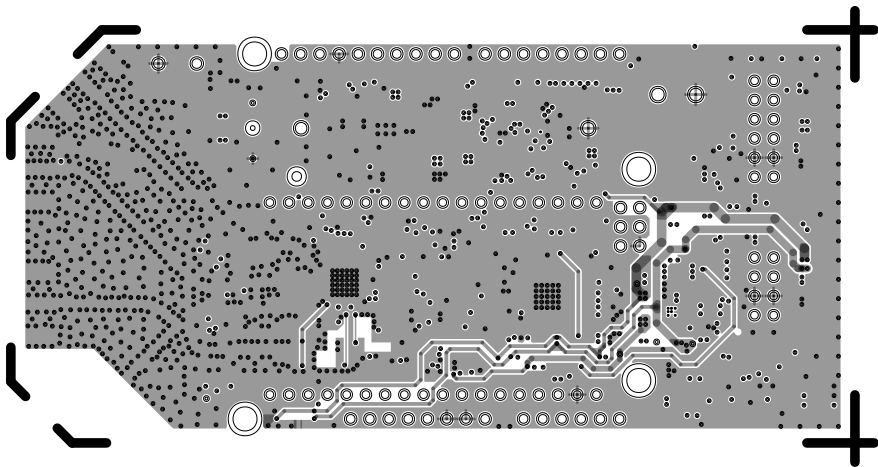
L1 PRIMARY
08-079882-01
REV B



L2 GND
08-079882-07
REV B



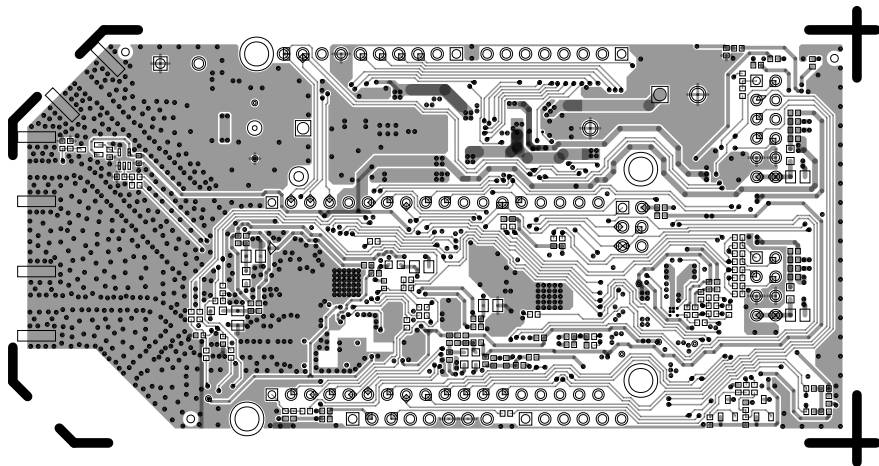
L3 PWR
08-079882-08
REV B



L4 SECONDARY

08-079882-02

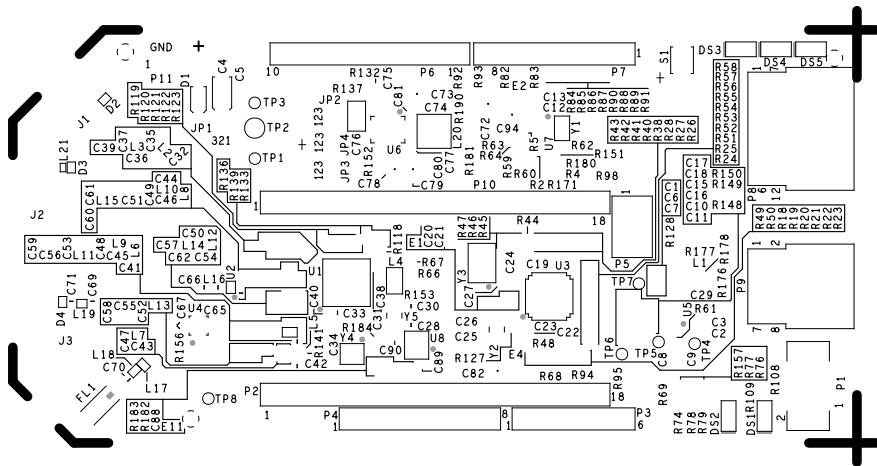
REV B



SILKSCREEN PRIMARY

08-079882-03

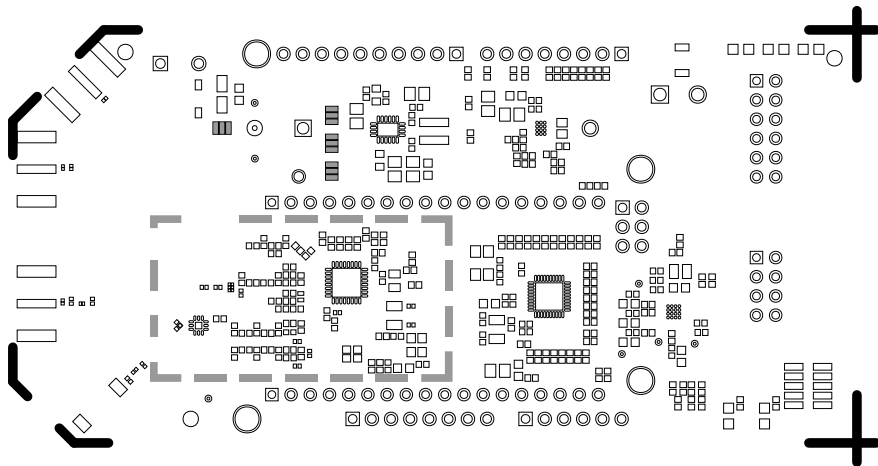
REV B



SOLDERMASK PRIMARY

08-079882-04

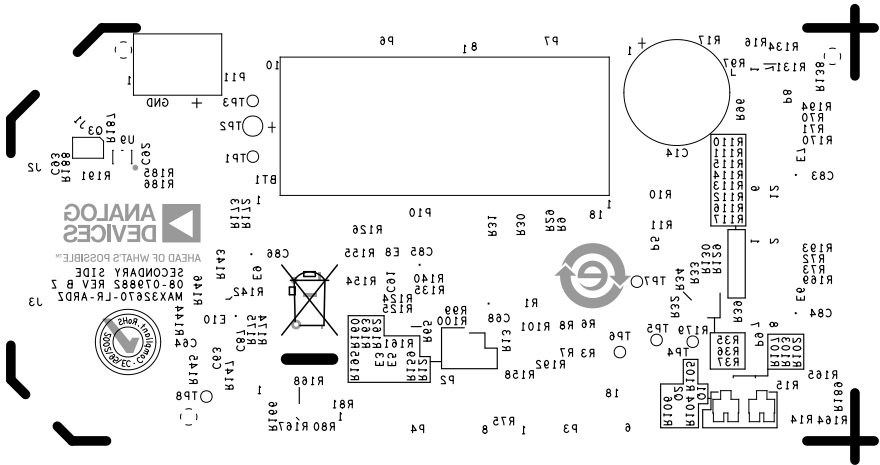
REV B



SILKSCREEN SECONDARY

08-079882-05

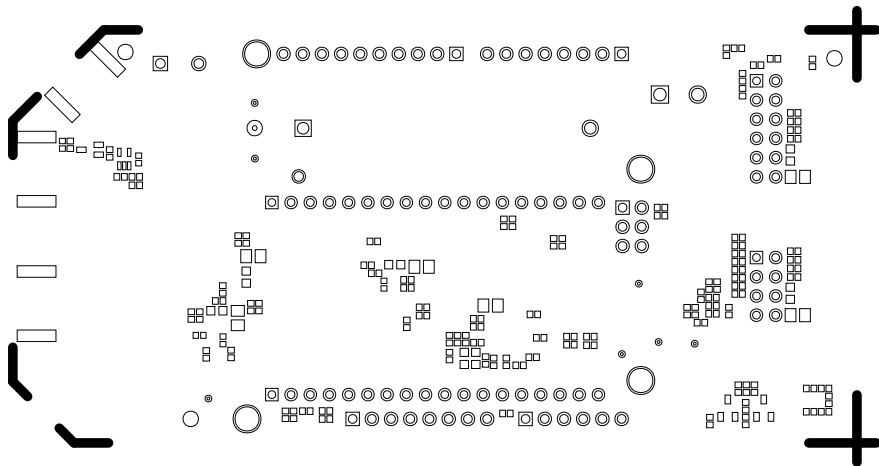
REV B



SOLDERMASK SECONDARY

08-079882-06

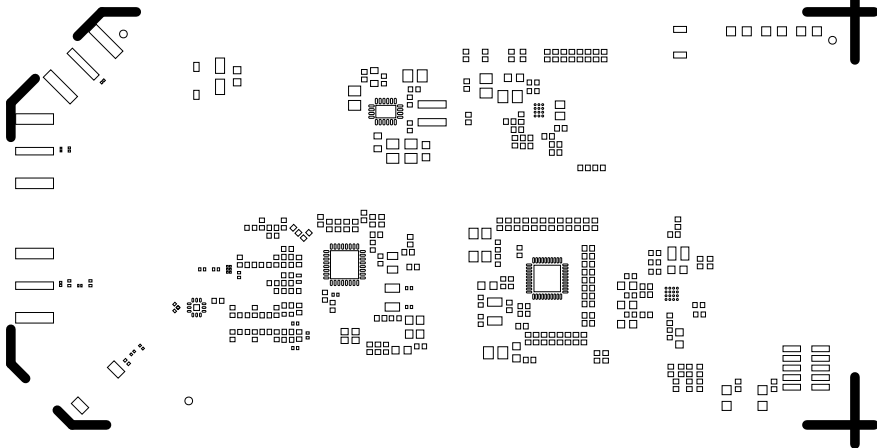
REV B



PASTEMASK PRIMARY

08-079882-09

REV B



PASTEMASK SECONDARY

08-079882-10

REV B

